

Excess Pressure Valve Type EPL

Description

These simple and robust designed excess pressure valves (without auxiliary energy) are adapted to a large number of processes requiring upstream pressure control. The excess pressure valve opens when the upstream pressure increases. The set point is adjustable with a hand wheel which compresses a spring more or less according to the desired set point value. These valves are particularly adapted for gases (air, nitrogen...).

Direct passage valve
EPL (Single direct seat)

Characteristics

Flanges PN 16 : DN15 to DN100 according EN 1092-1
Flanges Class 150 : 1" - 2" - 3" - 4" according EN 1759-1 – B16-5

Material : Steel 1.0619 – A216 WCB for DN 80 – DN 100 - 3" - 4"
Stainless steel 1.4409 – CF3M
Stainless steel 1.4408 – CF8M for DN 80 – DN 100 - 3" - 4"
Design ANSI B16-34, EN 12516-1 & EN 12516-2

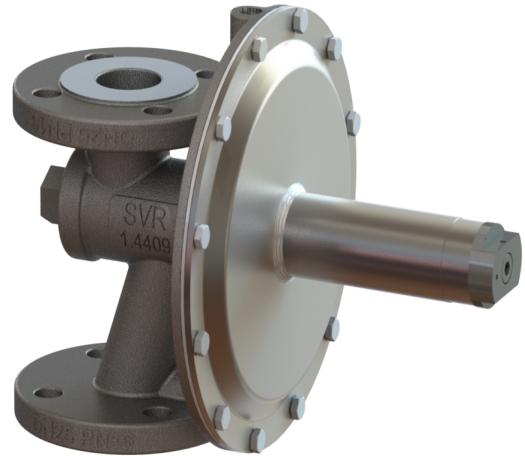
PMA : according to PN
TMA : according to material
PMO : according to max. range
TMO : 160°C

Options

- Diaphragm in FPM
- Adjusted & sealed
- Rain cover
- Certificate Atex - material - FDA

Special features

Wide range of Kv: 4 to 40
Pressure set point range: 5 to 1000 mbar



Sart von Rohr SAS
25 Rue de la ChapelleBP 2 – F 68620
Bitschwiller-les-Thann

Tel. 33/(0)3 89 37 79 50
Fax 33/(0)3 89 37 79 51
E-mail : sartventes@sart-von-rohr.fr

How to order

Excess pressure valve type EPL

DN, PN Material, Bride Flanges according to EN.Kv = \varnothing siège/seat = _____ mm

Clapet, tige en Plug, stem and seat in stainless steel.

Diaphragm in PTFE (or FPM)

Plage Range of adjustment from ____ to ____ mbar

Certifications

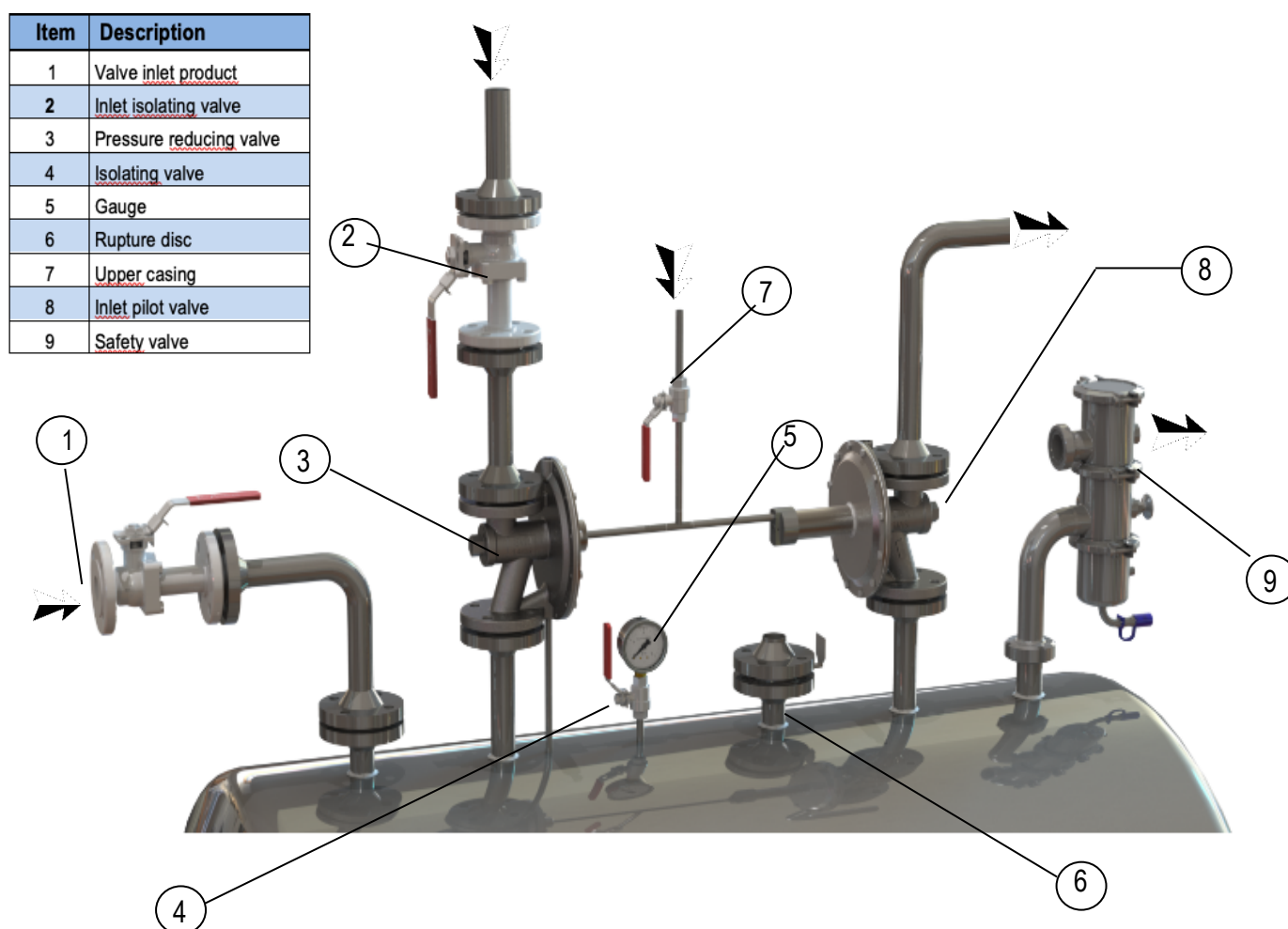
DESP; ATEX II 2 G/D; ISO9001 / PED; ATEX II 2 G/D; ISO9001

Operation

The excess pressure valves type EPL are self-actuated (without auxiliary energy) controlling the pressure upstream compared to a set point. The excess pressure valve opens by increase in the pressure upstream in a proportional way.

The choice of the adjustment range will be carried out according to the pressure upstream to control and of adjustment range table.

Example of installation



Mounting

It is imperative to assemble the excess pressure valve, on vertical piping, the diaphragm vertical, to reduce potential areas of retention (condensation). However, after consulting our sales department, according the working pressure, the regulator could be mounted in horizontal position, spring upwards.

Operational Limits

Déverseur type <i>Excess pressure valve</i>	Diamètre nominal <i>Nominal Diameter</i>	Débit de fuite <i>Leakage rate</i>	Température maxi dans l'actionneur <i>Max. temperature in actuator</i>
EPL Mono Siège / Single seat	DN 15 ... DN 100	Etanchéité souple / <i>sealing</i> Classe VI ANSI B16 104	160°C Avec membrane PTFE <i>with PTFE diaphragm</i>

EPL DN15 – DN100 (Flanges)

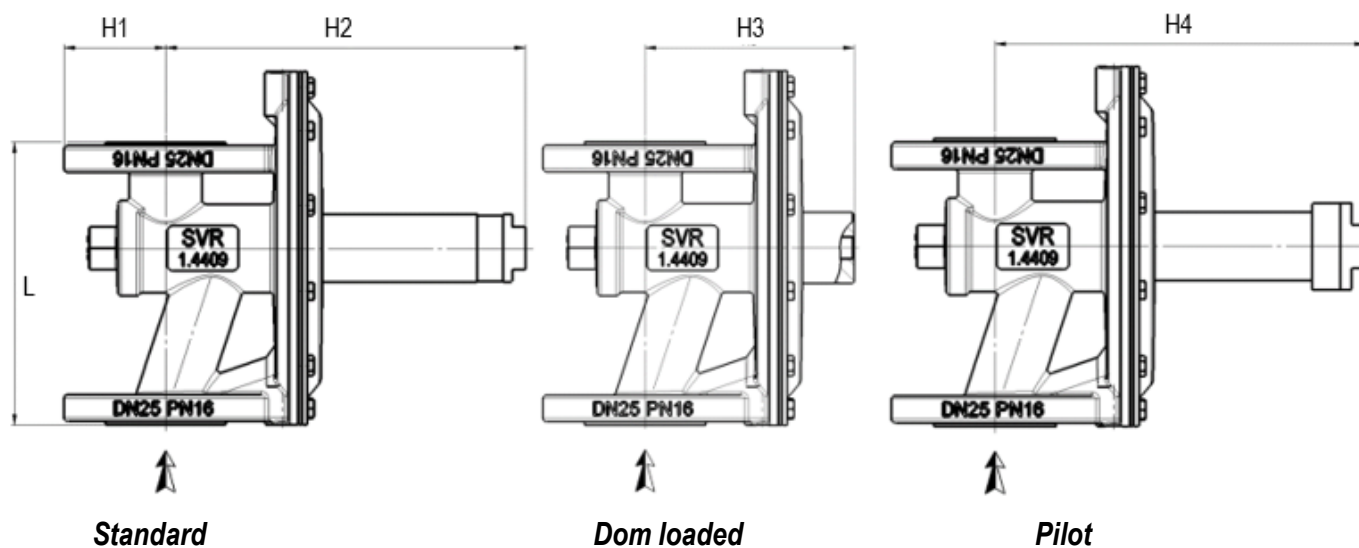
Kv values (m³/h)

Brides Class 150 / <i>Flanges Classe 150</i> Brides / <i>Flanges</i>		1"		2"	3"	4"
	15	25	40	50	80	100
Ø Siège / <i>Seat</i>						
14	4					
21		9.5				
42			40	40		
65						
80						

Adjustment range (bar eff)

DN 15	DN 25	1"	DN 40	DN 50	2"
10 - 30 mbarg	10 - 20 mbarg	10 - 20 mbarg	10 - 20 mbarg	10 - 20 mbarg	10 - 20 mbarg
20 - 100 mbarg	10 - 50 mbarg	10 - 50 mbarg	10 - 50 mbarg	10 - 50 mbarg	10 - 50 mbarg
100 - 300 mbarg	30 - 150 mbarg	30 - 110 mbarg	30 - 150 mbarg	30 - 150 mbarg	30 - 150 mbarg
200 - 600 mbarg	50 - 300 mbarg	50 - 270 mbarg	50 - 300 mbarg	70 - 300 mbarg	70 - 300 mbarg
300 - 1000 mbarg	160 - 850 mbarg	200 - 900 mbarg	170 - 600 mbarg	170 - 600 mbarg	170 - 600 mbarg
Coussin d'air	Coussin d'air	Coussin d'air	Coussin d'air	Coussin d'air	Coussin d'air

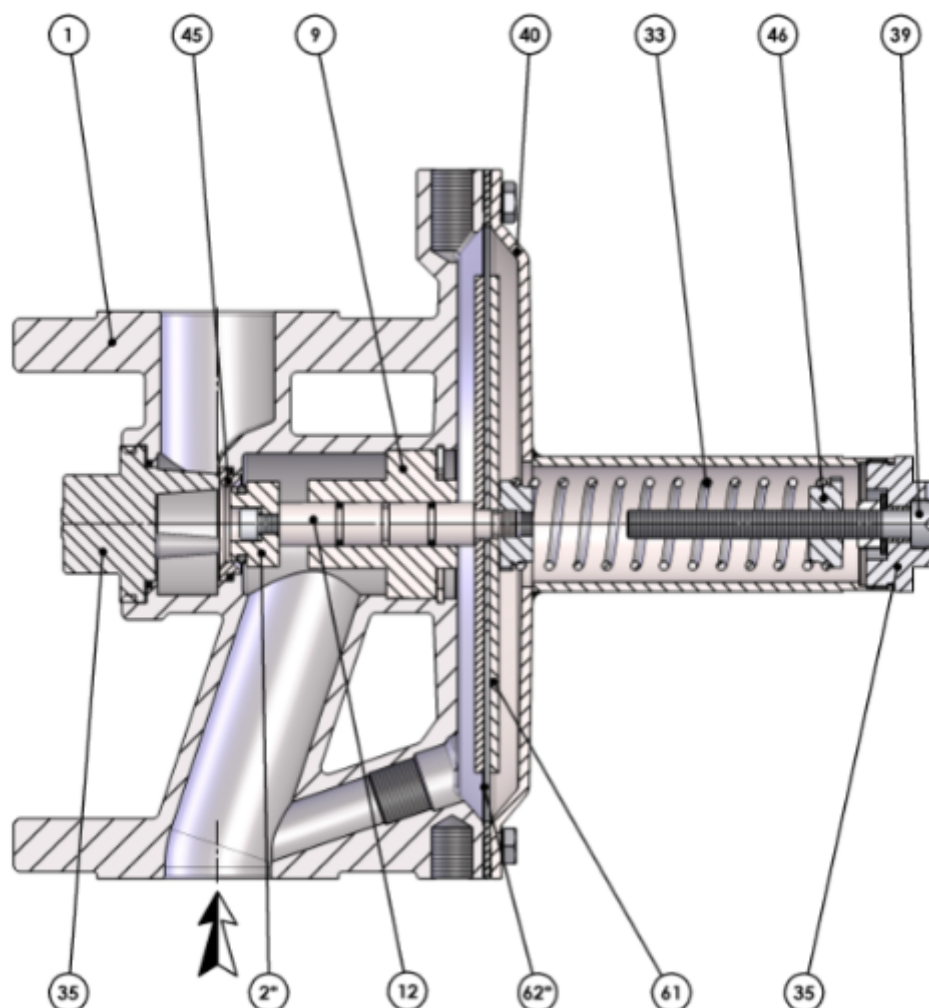
Dimensions



DN	15	25	40	50	80	100
L (ISO PN16)	130	160	200	230	310	350
L (Class 150 RF)		127		178	222	254
H1	47.5	57.5	75	82.5		
H2	190.5	203	254	254		
H3	107	118	164	164		
H4	193	206	257	257		
Mass (kg)	4.5	6.8	16.2	19		

All dimensions in mm

Part list - EPL DN15 – DN50 / 1/2" – 2"



Rep. / Item	Désignation / Description	Matière / Material
1	Corps / Body	1.4409 / 1.4408 / 1.0619
2*	Support joint / O-ring bracket	Inox / Stainless steel
9	Guide / Guide	Inox / Stainless steel
12	Tige / Pin	Inox / Stainless steel
33	Ressort / Spring	Inox / Stainless steel
39	Vis de réglage / Adjusting screw	Inox / Stainless steel
40	Carter supérieur / Upper casing	1.4404 / 1.0619
45	Siège / Seat	Inox / Stainless steel
46	Guide ressort / Spring guide	Inox / Stainless steel
61	Fond membrane / Diaphragm plate	Inox / Stainless steel
62*	Membrane / Diaphragm	PTFE FDA / FPM

* Spare parts

Pressure relief valve characteristic

